

P. O. Box 27615
San Francisco, CA 94127

July 8, 1985

Citizens Advisory Committee
Open Space/Park Renovation
McLaren Lodge
Golden Gate Park
San Francisco, CA 94117

Ladies & Gentlemen:

The Sunnyside Neighborhood Association respectfully requests that additional funds, about \$84,000, be allocated for the completion of the Sunnyside Monterey Blvd. Conservatory Park, a project first funded by the committee in 1979. This amount is the difference between funds now available (\$120,000) and bids received (\$204,000) for park completion work.

The Department of Public Works has not been successful in obtaining reasonable bids after two attempts. Work remaining includes plants, landscaping, irrigation plumbing, and paving and construction of the easement walk and steps to Joost Avenue. Bids received and rejected to date were: October '84, \$204,000, and May '85, \$172,000.

An attempt will be made to attract additional bids, perhaps on a modified project. The landscape architect for the park, George Swan, is considering the available \$120,000-130,000 funds and ways to minimize over-runs. Some reduction of park area and/or amenities would result with lower costs, such as: (1) elimination of the entrance and easement connecting Joost with the Monterey Blvd property, (2) eliminating steps/stairs within the easement portion, (3) reducing or eliminating plantings, or (4) minimizing irrigation capabilities.

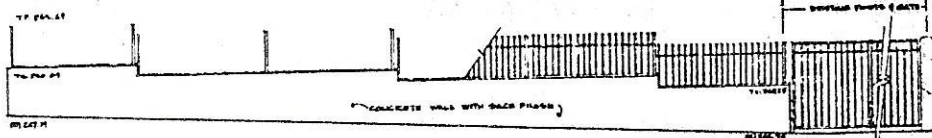
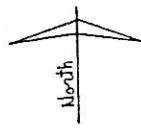
We of the Sunnyside feel strongly about the neighborhood park asset and its completion. We believe the walk and steps leading up to Joost Avenue and the mini-park walk beyond is an important feature of the overall project. With the plantings and historical conservatory theme, the irrigation work is an integral part as well. It is difficult to imagine the elimination of any of these park necessities. We seek your assistance in getting the park completed.

Sincerely,

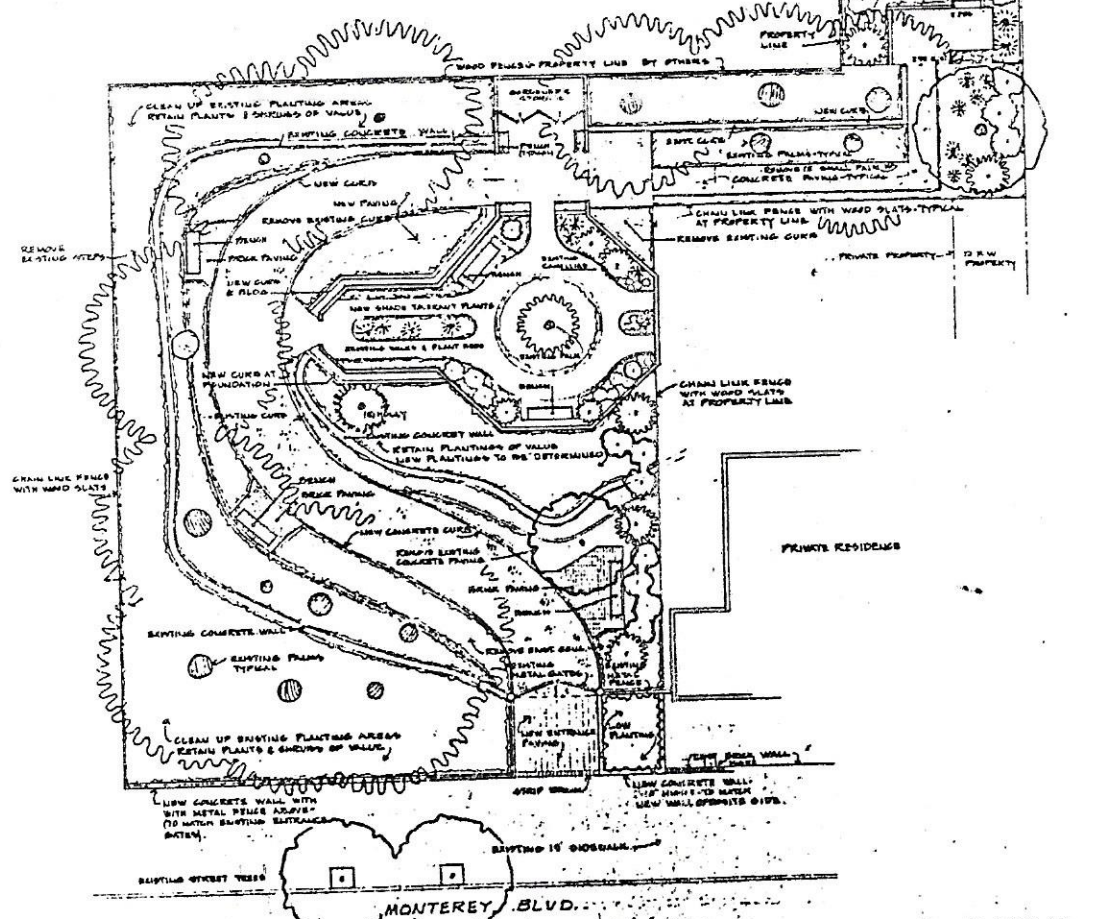
Joe Mahoney
Joe Mahoney, President
days 540-2219

Ken Hoegger, Conservatory Committee
days 239-6300

EXISTING CONCRETE SIDEWALK



ELEVATION-PROPOSED WALL & METAL FENCE ON MONTEREY. BLVD.
SCALE - 1/8" = 1'-0"



PRELIMINARY MASTER PLAN
MONTEREY BOULEVARD CONSERVATORY
MINI-PARK

Scale: one inch equals eight feet